

Non Clogging Spray Nozzles

Hollow Cone Spray Nozzles



Features

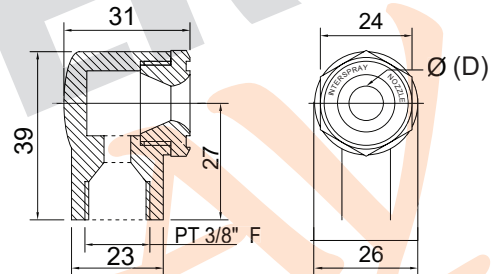
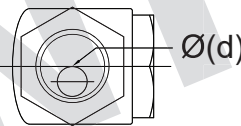
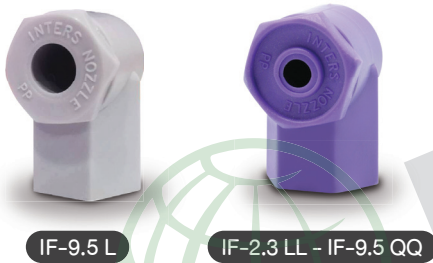
- A Hollow cone spray pattern with larger flow rates and smaller droplet sizes
- Durable, two-piece body, anti-clog design has no internal vane to clog or wear out. Fine atomization spray

Application

- Gas Cooling
- Wet Scrubber
- Chemical process
- Dust Suppression
- Pre-painting treatment

Size & Material

- Size : 3/8" Female PT
- Material : Moplen EP 400L Polypropylene Impact Copolymer Resin
- Max. operating temperature : 90°C



Model	Thread Female PT	Orifice Ø(D)	Spray angle			Pressure (bar) Spray Capacity (l/min)										Mean Drop. Dia. (µm)
			0.5	2.0	5.0	0.5	1.0	1.5	2.0	2.5	3.0	3.5	4.0	4.5	5.0	
IF	3/8"	9.5	116°	119°	122°	2.5	3.5	4.3	5.0	5.6	6.1	6.6	7.1	7.5	7.9	310~510
		2.3	62°	77°	77°	1.0	1.4	1.7	2.0	2.2	2.4	2.6	2.8	3.0	3.2	
		3.1	77°	89°	93°	1.4	1.9	2.3	2.7	3.0	3.3	3.6	3.8	4.1	4.3	
		3.1	76°	81°	81°	1.8	2.5	3.0	3.5	3.9	4.3	4.6	4.9	5.3	5.5	
		3.9	91°	98°	102°	1.6	2.3	2.8	3.3	3.6	3.9	4.2	4.5	4.8	5.1	
		3.9	80°	85°	85°	2.8	3.9	4.8	5.5	6.1	6.7	7.3	7.8	8.3	8.7	
		3.9	74°	68°	68°	3.7	5.2	6.3	7.3	8.2	8.9	9.7	10.3	11.0	11.5	
		5.9	99°	105°	108°	2.0	2.8	3.5	4.0	4.5	4.9	5.3	5.7	6.0	6.3	
		5.9	93°	94°	97°	4.2	5.9	7.3	8.4	9.4	10.3	11.1	11.9	12.6	13.3	
		5.9	84°	85°	85°	6.3	8.8	10.8	12.5	14.0	15.3	16.5	17.7	18.8	19.8	
		9.5	107°	109°	114°	4.9	6.9	8.5	9.8	11.0	12.0	13.0	13.9	14.7	15.5	
		9.5	94°	100°	105°	9.8	13.8	16.9	19.5	21.8	23.9	25.8	27.6	29.3	30.8	

How to order (Example)

3/8"

Pipe Size

IF 9.5 L

Model

PP

Material