

Non Clogging Spray Nozzles

Flat Spray nozzles



Features

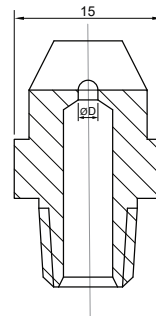
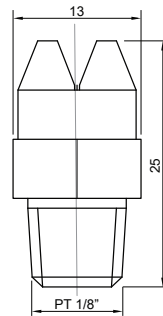
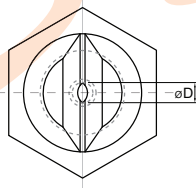
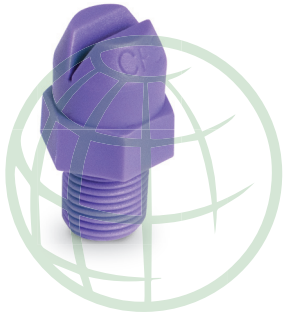
The nature of the spray is a single spray used in small quantities. It is a flat type, which is widely distributed in the form of blades. The tip is cut into a V-shaped groove. Open the middle of the hole. The size of the spray head is 4. (2, 3, 4, 5 mm) Diameter difference. The amount and angle of spraying vary.

Application

- Cleaning, Cooling : Solid Parts, Machine Parts, Plastic Parts, Packaging.
- Cleaning surface hardening.
- Get rid of water bubbles.

Size & Material

- Thread : 1/8" Male PT
- Material : Moplen EP 400L Polypropylene Impact Copolymer Resin
- Max. operating temperature : 90°C



Model	Orifice $\varnothing(D)$	Spray angle			Pressure (bar) Spray Capacity (l/min)										Mean Drop. Dia. (μm)	
		0.5	2.0	5.0	0.5	1.0	1.5	2.0	2.5	3.0	3.5	4.0	4.5	5.0		
CFS	CFS-2	2	45°	60°	68°	1.2	1.5	1.9	2.1	2.2	2.7	3.1	3.5	3.7	4	300~400
	CFS-3	3	80°	90°	95°	2.5	3.2	3.9	4.6	5.1	5.5	5.7	6.1	6.6	6.9	
	CFS-4	4	88°	100°	105°	3.5	4.8	5.8	6.7	7.7	8.1	8.8	9.4	9.9	10.5	
	CFS-5	5	95°	105°	110°	4.4	6.7	8.5	10.1	11.7	12.5	13.8	14.8	15.8	18.2	