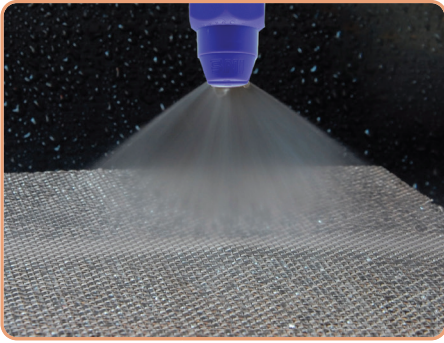


Non Clogging Spray Nozzles

Flat Spray nozzles



Features

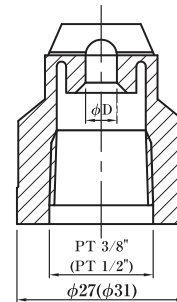
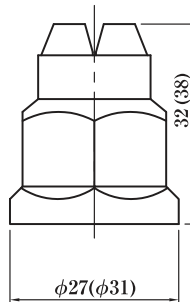
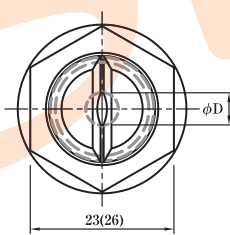
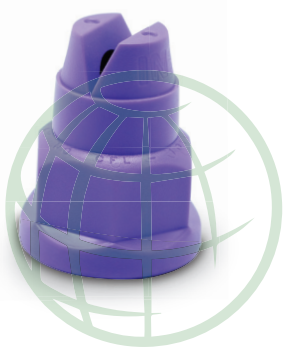
The nature of the spray is a single spray used in small quantities. It is a flat type, which is widely distributed in the form of blades. The tip is cut into a V-shaped groove. Open the middle of the hole. The size of the spray head is 4. (10, 12, 14, 16 mm) diameter difference the amount and angle of spraying vary.

Application

- Cleaning, Cooling : Solid Parts, Machine Parts, Plastic Parts, Packaging
- Cleaning surface hardening
- Get rid of water bubbles.

Size & Material

- Thread : 1/2" Female PT
- Material : Moplen EP 400L Polypropylene Impact Copolymer Resin
- Max. operating temperature : 90°C



Model	Orifice Ø(D)	Spray angle			Pressure (bar) Spray Capacity (l/min)										Mean Drop. Dia. (µm)	
		0.5	2.0	5.0	0.5	1.0	1.5	2.0	2.5	3.0	3.5	4.0	4.5	5.0		
CFL	CFL-10XX	10	100°	103°	107°	15.1	21.4	26.2	30.2	33.8	37.0	40.0	42.7	45.3	47.8	350~480
	CFL-12XX	12	101°	107°	108°	21.3	30.1	36.8	42.5	47.5	52.1	56.2	60.1	63.8	67.2	
	CFL-14XX	14	107°	114°	114°	28.0	39.6	48.5	56.5	62.6	68.6	74.1	79.2	84.0	88.5	
	CFL-16XX	16	113°	118°	118°	36.0	50.9	62.4	72.0	80.5	88.2	95.2	101.8	108.0	113.8	