

### หัวฉีดแบบทั่วไป

### Full cone spray nozzle



#### Features

- Full cone spray pattern with a round impact area and uniform distribution.
- Spray capacity ranges from small to medium.
- X-shaped whirler provides large free passage diameter for minimal clogging.



#### Application

- Cleaning : Gas, incinerator fumes, machinery, eliminators, screen, tanks, parts, crushed stones, earth and sand.
- Cooling : Gas, machineries, tanks, steels.
- Spraying : Waste water treatment, aeration, foam breaking, fire extinguishing, dust suppression, sea water desalination

#### Material

- S303 or B (brass)
- PP, PVDF

#### Used In Process

- Electronics, Automotive, Steel etc.

#### Standard Pressure

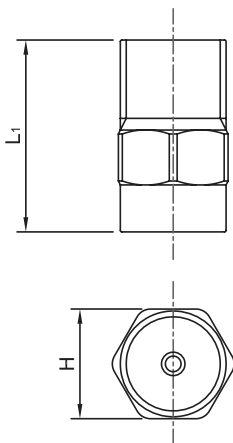
- 0.2 bar

#### Shapes And Dimension

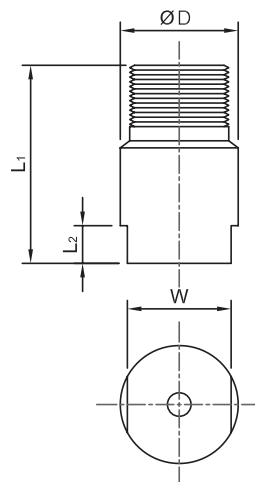
Pipe conn. size	Dimensions (mm)			Mass (g)
	L <sub>1</sub>	L <sub>2</sub>	H	S303, S316
1/8M (005)	32.5	-	12	9.5
1/8M (010-030)	20	-	12	11
1/4M (005-030)	20	-	14	18
1/4M (040-060)	28	-	14	21
3/8M	34	6	-	50
1/2M	42	8	-	93.4

[Note] Appearance and dimensions may differ slightly depending on materials and nozzle codes.

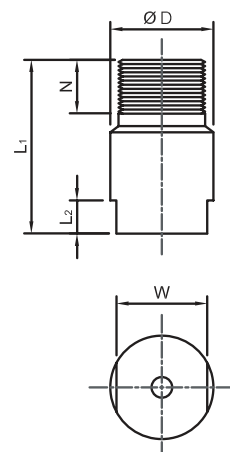
#### 1/8M , 1/4M



#### 3/8M 1/2M



#### 1/2M



หัวฉีดแบบทั่วใบ

Full cone spray nozzle

### Specifications

Model	Spray Code	Pipe Connection Size				Free Pass. Dia. (mm)	Spray Angle (°)				Spray Capacity (l/min)								Mean Drop. Dia. (µm)
		1/8M	1/4M	3/8M	1/2M		0.5 bar	2 bar	5 bar	0.3 bar	0.5 bar	1 bar	1.5 bar	2 bar	3 bar	5 bar	7 bar	10 bar	
CJJ series	005	/	/			0.4	-	55	65	-	-	0.36	0.44	0.50	0.59	0.73	0.83	0.96	270
	010	/	/			0.7	50	55	45	-	0.53	0.73	0.88	1.00	1.18	1.45	1.67	1.93	290
	015	/	/			0.8	60	65	55	-	0.79	1.09	1.31	1.50	1.77	2.18	2.50	2.89	300
	020	/	/			1.4	60	65	55	-	1.06	1.46	1.75	2.00	2.36	2.91	3.34	3.86	320
	030	/	/			1.4	65	70	60	-	1.59	2.18	2.63	3.00	3.54	4.36	5.00	5.79	410
	040	/	/			1.7	60	65	55	-	2.12	2.91	3.51	4.00	4.72	5.81	6.67	7.72	380
	050	/	/			1.7	65	70	60	-	2.65	3.64	4.38	5.00	5.90	7.27	8.34	9.64	350
	060	/	/			1.7	70	75	65	2.51	3.18	4.37	5.26	6.00	7.08	8.72	10.0	11.6	520
	070	/	/			1.9	60	65	60	2.93	3.71	5.09	6.13	7.00	8.26	10.2	11.7	13.5	480
	080	/	/			1.9	65	70	65	3.35	4.24	5.82	7.01	8.00	9.44	11.6	13.3	15.4	450
	10	/	/			2.6	75	80	75	4.19	5.29	7.28	8.76	10.0	11.8	14.5	16.7	19.3	420
	12	/	/			2.6	80	85	80	5.03	6.35	8.73	10.5	12.0	14.2	17.4	20.0	23.1	660
	14	/	/			3.5	65	70	55	5.86	7.41	10.2	12.3	14.0	16.5	20.3	23.3	27.0	590
	16	/	/			3.5	70	75	60	6.70	8.47	11.6	14.0	16.0	18.9	23.3	26.7	30.9	560
	18	/	/			3.5	75	80	65	7.54	9.53	13.1	15.8	18.0	21.2	26.2	30.0	34.7	530
	20	/	/			3.5	80	85	70	8.38	10.6	14.6	17.5	20.0	23.6	29.1	33.4	38.6	740

**How to order** Please order for a specific nozzle on this coding system

(Example)

**1/4M**

Pipe Size

**CJJ**

Model

**005**

Spray Code

**S303**

Material

\*Material Available:  
Stainless Steel: S303,  
S316, S316L  
Brass, PP, PVDF